

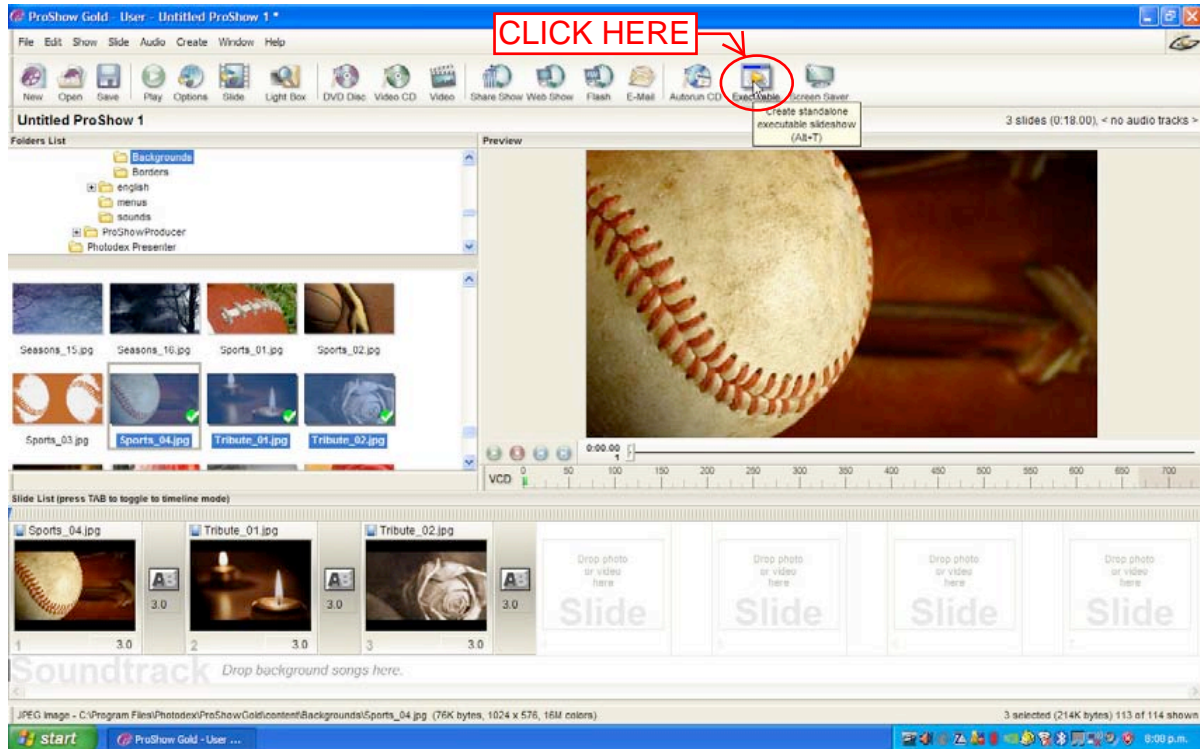
Help Sheet for ProShow Gold and Producer Programmes. Creating PC Executables.

When you have completed your slideshow & you are about to save it, the following are the recommended settings for entering the Tauranga AV Salon competition.

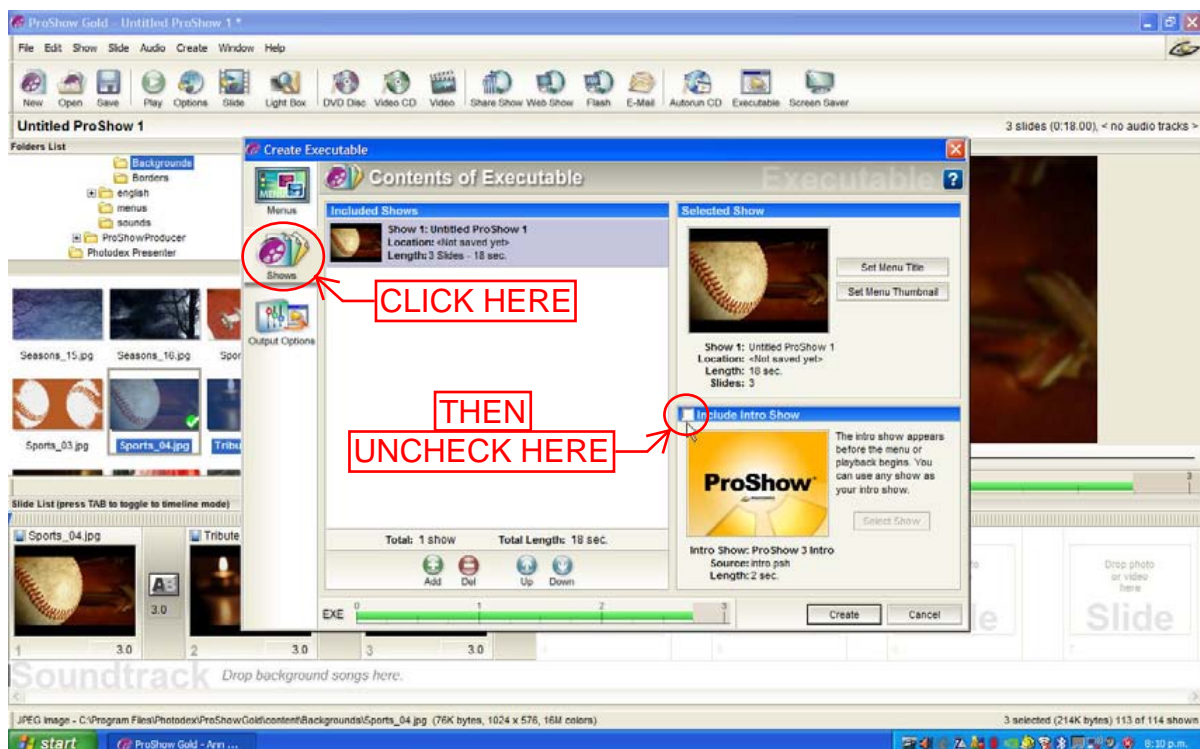
NOTE:- To find which version of ProShow Gold or Producer you are using,
Left Click 'Help' (*in top menu bar*) Then Left Click 'About'

ProShow Gold version 2 & 3

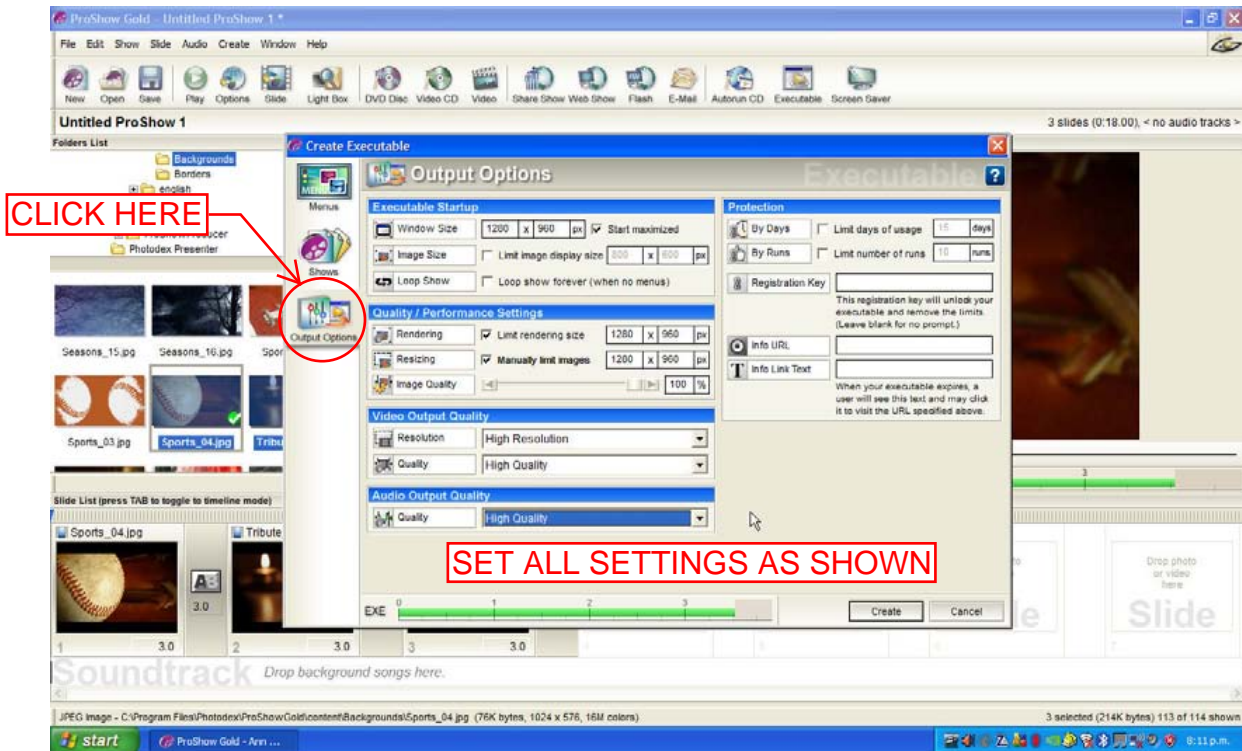
1/. Left Click 'Executable' in menu bar



2/. Left Click 'Shows' tab Uncheck/turn off 'Include Intro Show'

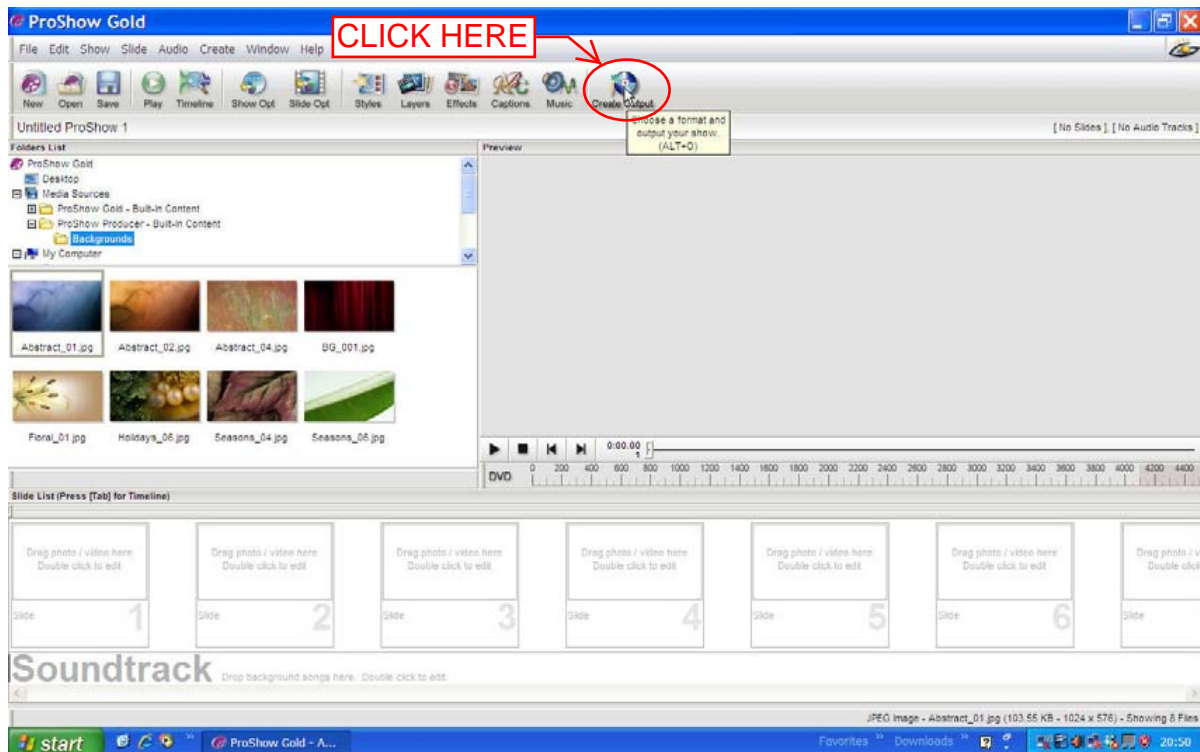


3/. Left Click 'Output Options' tab Set the settings as shown in the image below

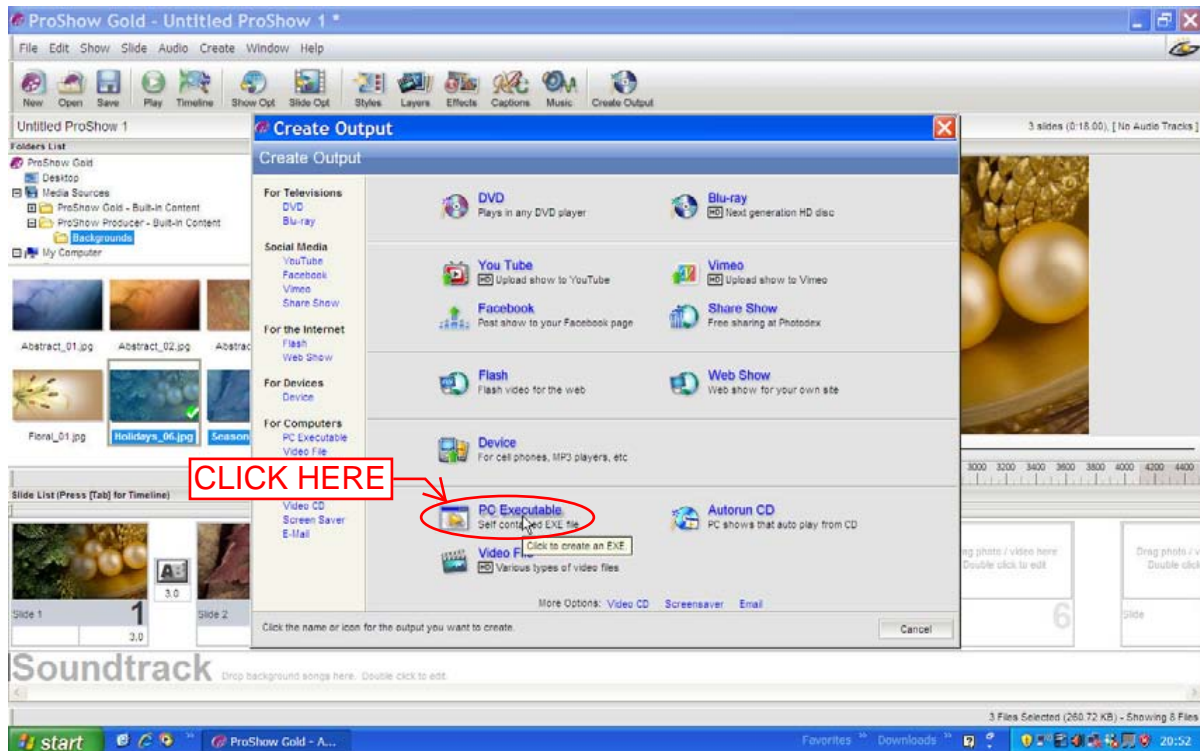


ProShow Gold version 4

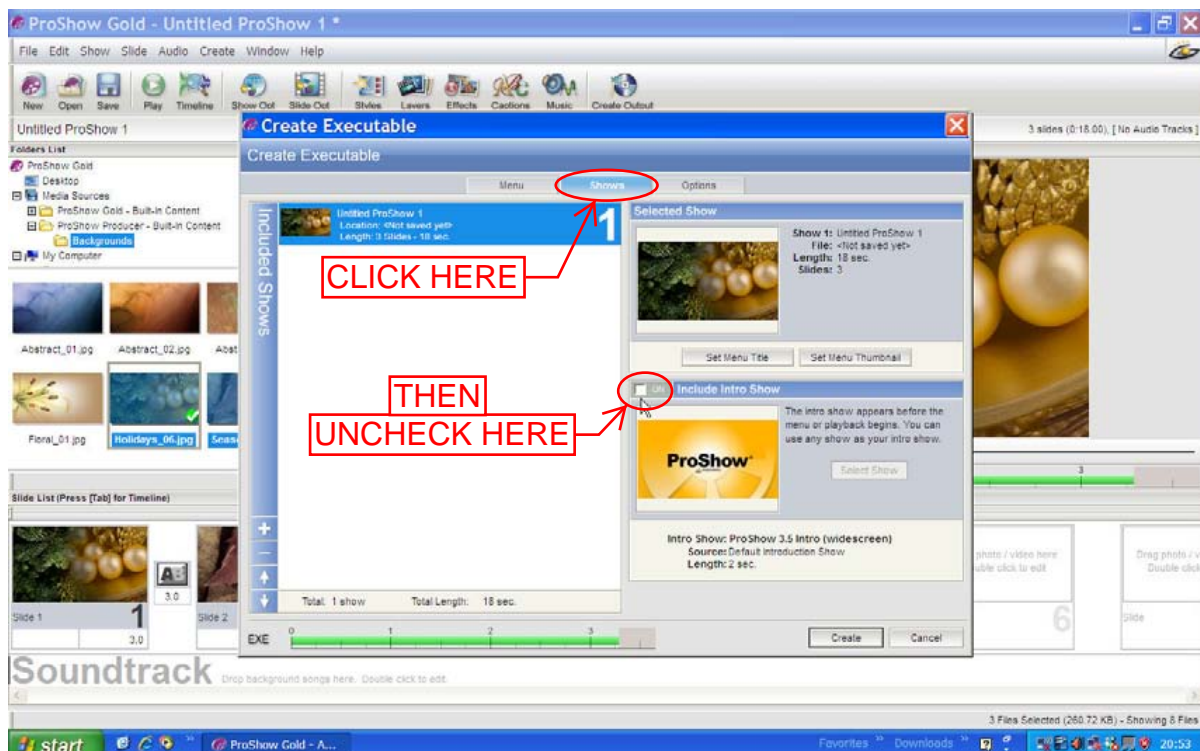
1/. Left Click 'Create Output' in the menu bar



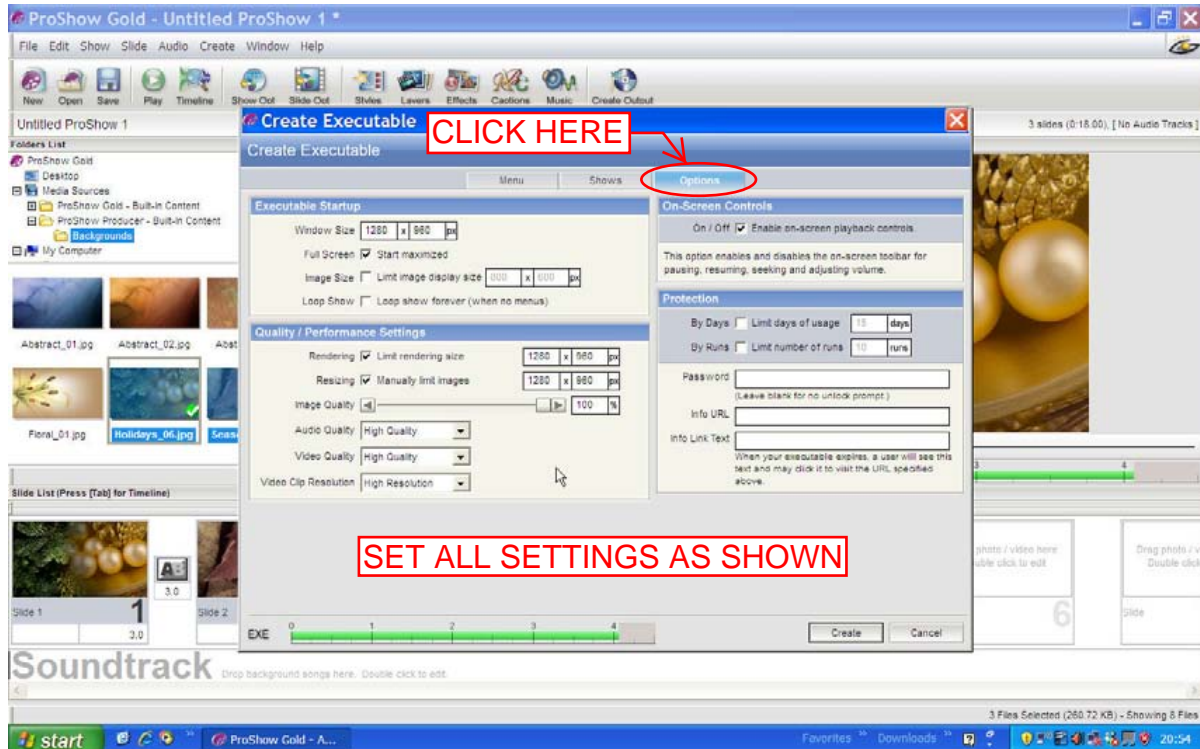
2/. Left Click 'PC Executable'



3/. Left Click 'Shows' tab Uncheck/turn off 'Include Intro Show'

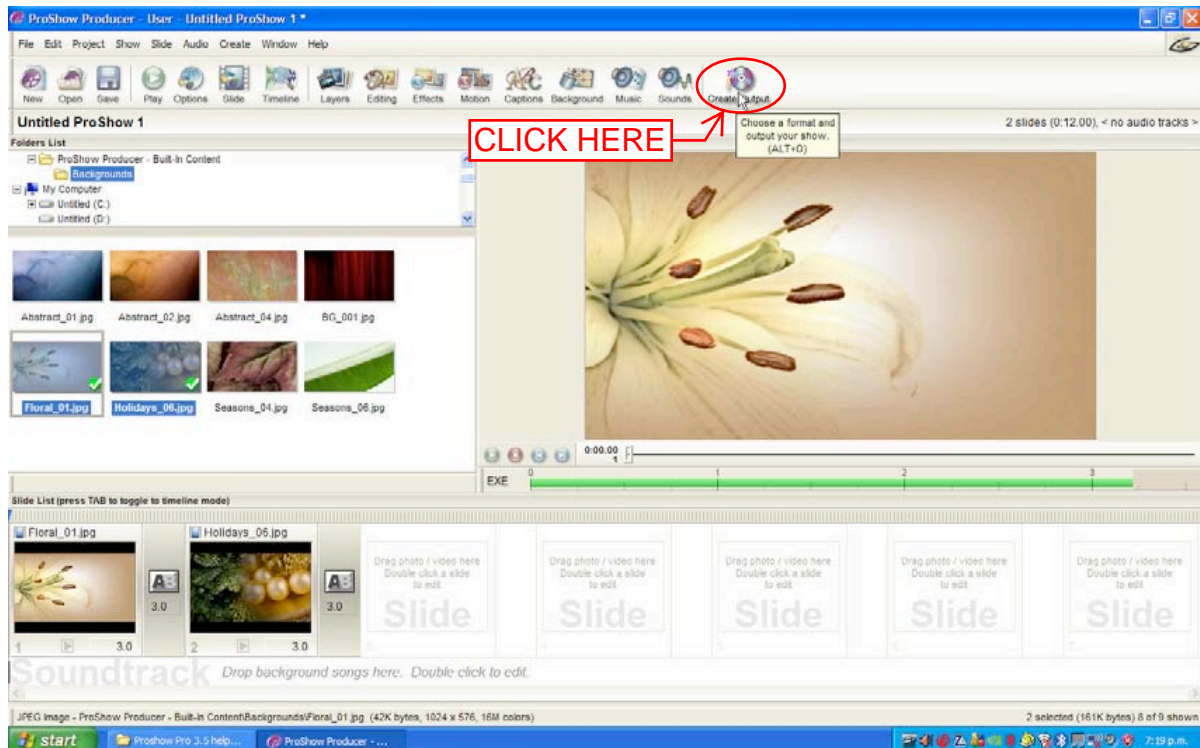


4/. Left Click 'Output Options' tab Set the settings as shown in the image below

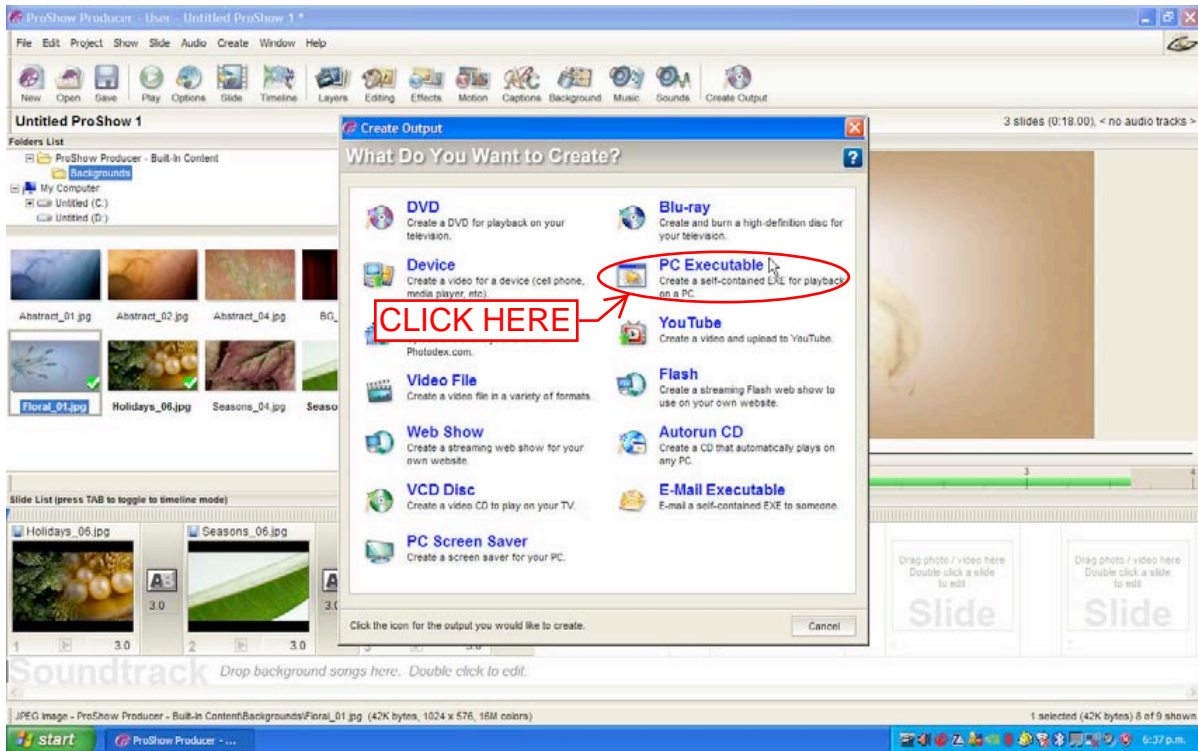


ProShow Producer version 3

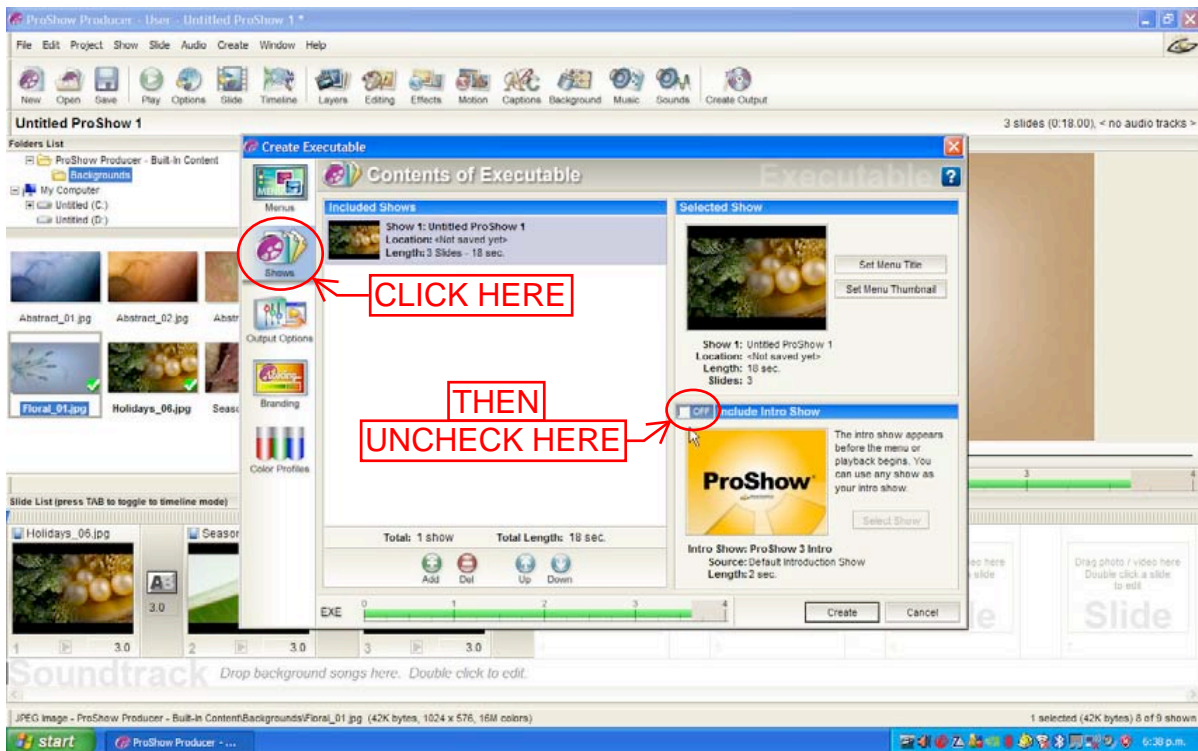
1/. Left Click 'Create Output' in the menu bar



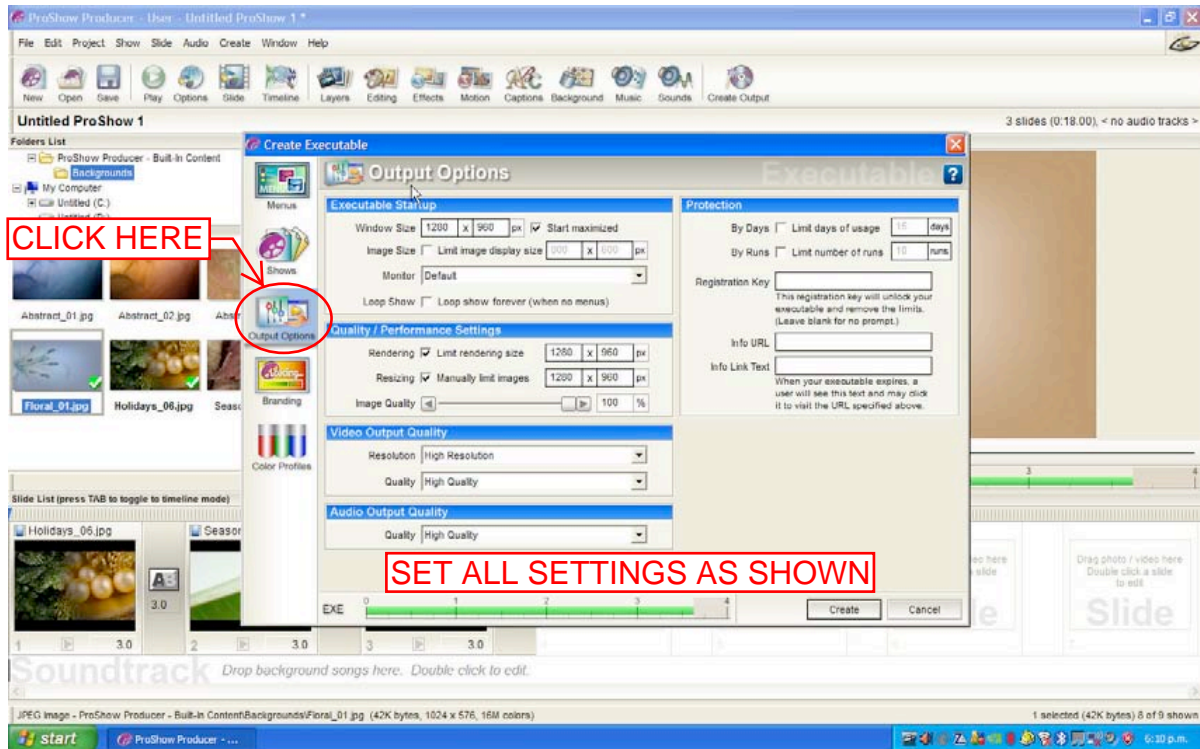
2/. Left Click 'PC Executable'



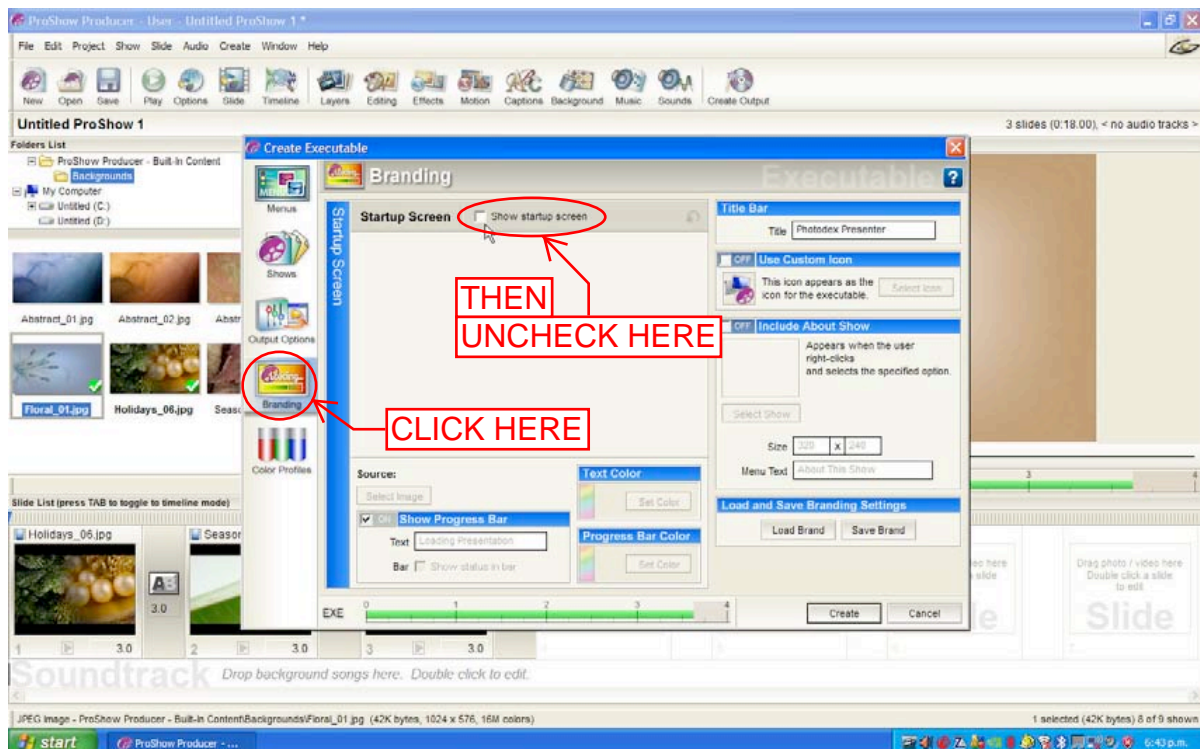
3/. Left Click 'Shows' tab Uncheck/turn off 'Include Intro Show'



4/. Left Click 'Output Options' tab Set the settings as shown in the image below

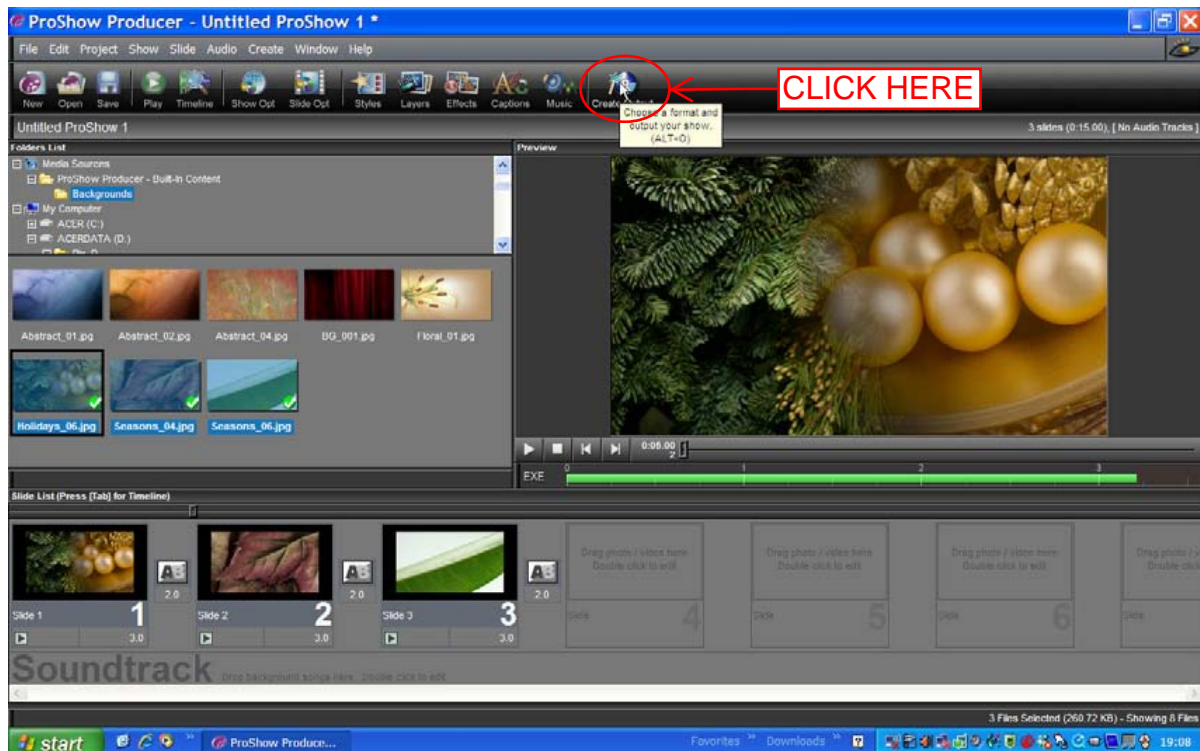


5/. Left Click 'Branding' tab Suggest uncheck/turn off 'Show startup screen'

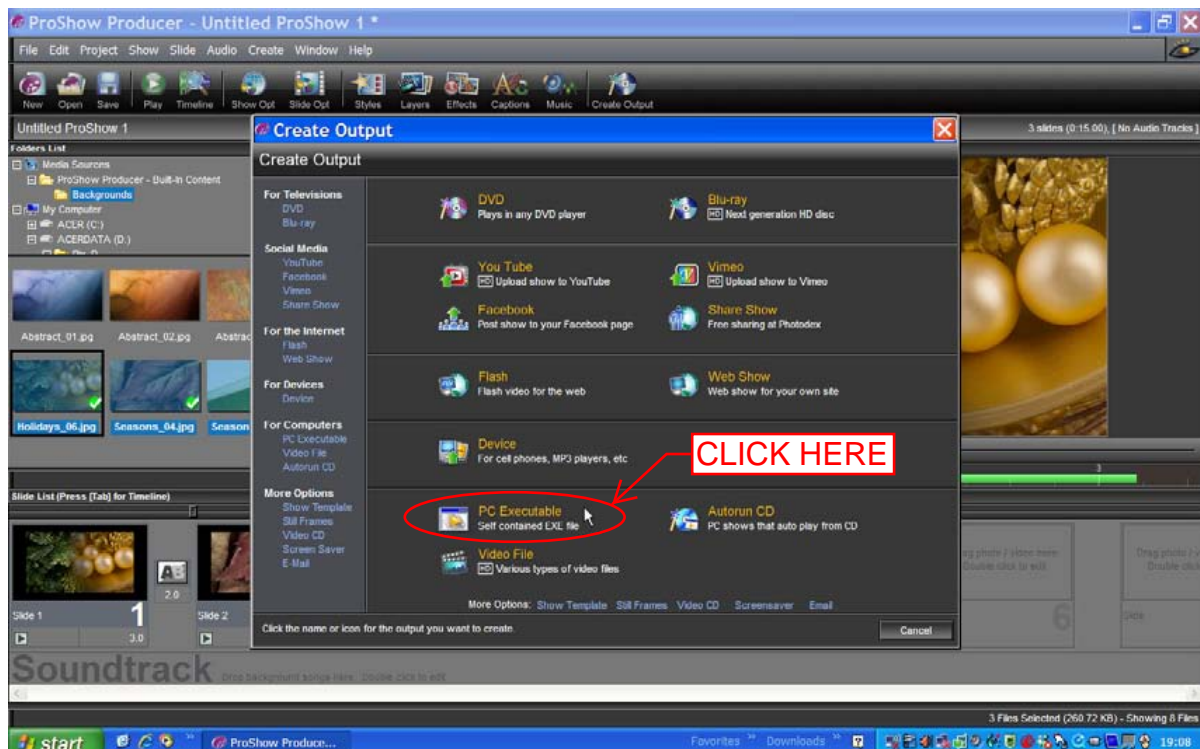


ProShow Producer version 4

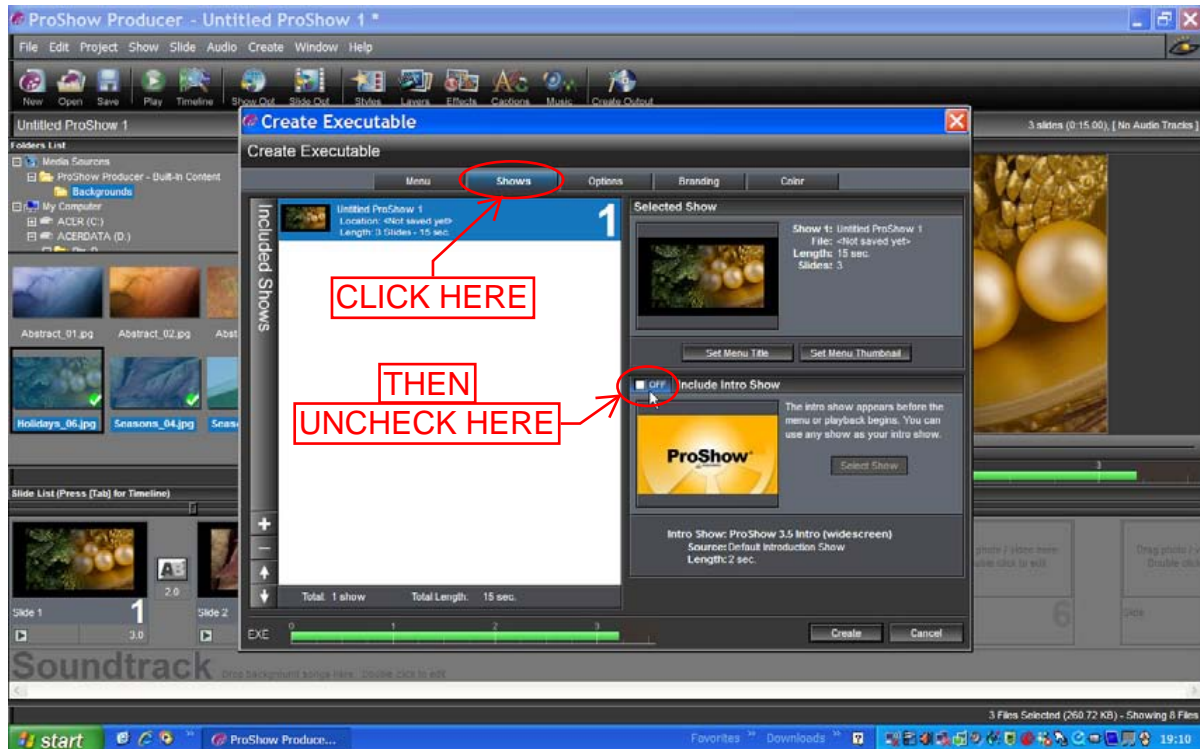
- 1/. Left Click 'Create Output' in the menu bar



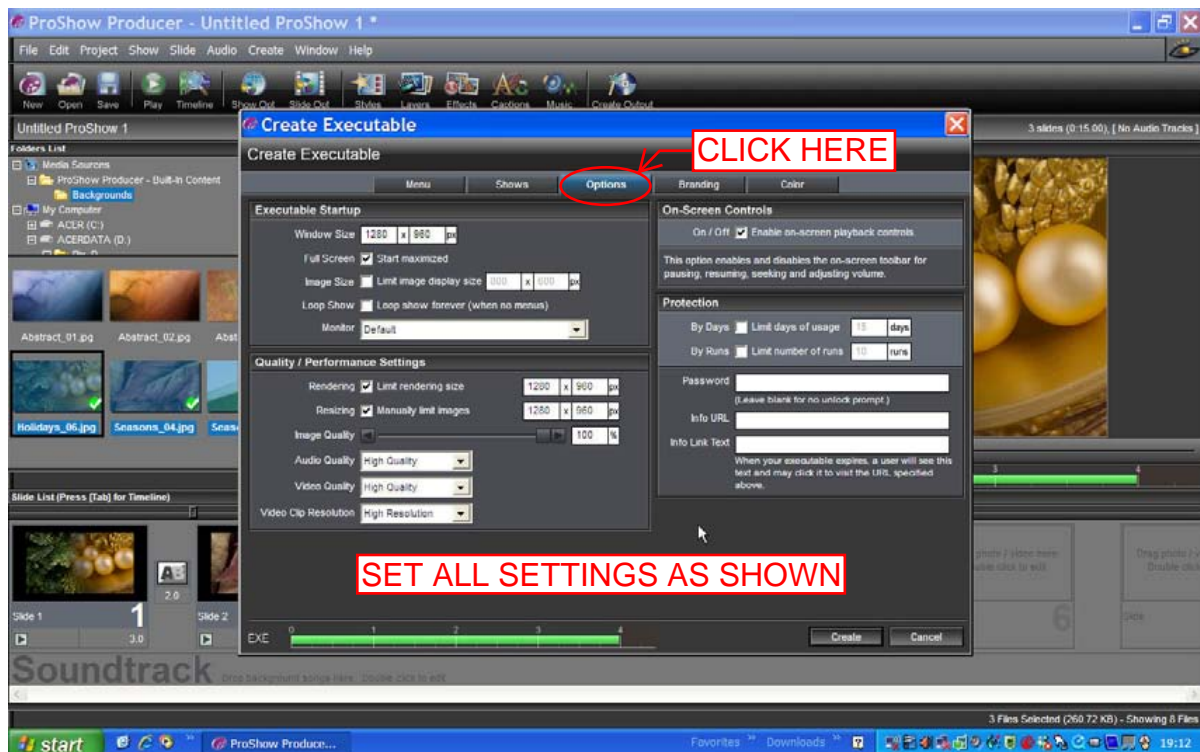
- 2/. Left Click 'PC Executable'



3/. Left Click 'Shows' tab Uncheck/turn off 'Include Intro Show'



4/. Left Click 'Output Options' tab Set the settings as shown in the image below



5/. Left Click 'Branding' tab

Suggest uncheck/turn off 'Show startup screen'

